



Golden Aurum

System Solutions Inc.

**PRODUCT
CATALOGUE**

Exo 200



Dimension : 14.5 x 12 x 5.4 mm
 Read Range : Up to 2.5 m
 Material : On Metal Only

Exo 210



62.5 x 9.4 x 3.6 mm
 Up to 3.0m
 Optimized for Metal substrates

Exo 400



19 x 13 x 5.9 mm
 Up to 4.0 m (global)
 On Metal Only

Exo 400P



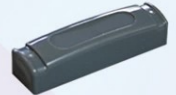
23.5 x 13 x 6.9 mm
 Up to 3.5 m
 Optimized for Plastic assets

Exo 600
 With Attachment Holes



80 x 15 x 12.2 mm
 Up to 6.0m (US/EU)
 Optimized for Metal

Exo 600
 Without Attachment Holes



80 x 15 x 12.2 mm
 Up to 6.0m (US/EU)
 Optimized for Metal

Exo 750



Dimension : 52.5 x 45 x 14 mm
 Read Range : Up to 10.0 m (global)
 Material : Optimized for Metal

Exo 800



110 x 25 x 12.85 mm
 Up to 8.0 m (on) US/EU
 Optimized for Metal

Fit 200



8.6 x 6.1 x 2.6 mm
 Up to 2.5 m
 On Metal Only

Fit 210



56.5 x 5.0 x 1.3 mm
 Up to 3.0 m
 Optimized for Metal substrates

Fit 400



13.1 x 7.1 x 3.1 mm
 Up to 4.0 m
 On Metal Only

Fit 400F



17.6 x 7.1 x 4.1 mm
 Up to 3.5 m
 Plastic and Non-metallic substrates

Flex Label



Dimension : 77 x 15 x 3.2 mm
 Read Range : Up to 5.0 m (US), 3.5 m (EU)
 Material : Any

Flex AI



75 x 25 x 1.2 mm
 Up to 4.0 m (fixed reader)
 Optimized for Metal

Flex LP



70 x 19 x 1.45 mm
 Up to 5.0 m (fixed reader)
 Optimized for Metal

Grip



113 x 25.5 x 16.4 mm
 Up to 4.0 m
 Metal and Non-metallic substrates

IQ 400



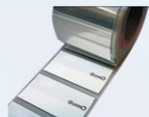
103 x 28 x 0.8 mm
 Up to 4.0 m
 Optimized for Metal and liquid

IQ 400P



46.5 x 12.4 x 0.03 mm
 Up to 5.0 m
 Plastic and Non-metallic substrates

IQ 600



Dimension : 103 x 28 x 0.8 mm
 Read Range : Up to 3.0 m
 Material : Optimized for Metal and liquid

IQ 800P



91 x 21 x 0.025 mm
 Up to 10.0 m
 Plastic and Non-metallic substrates

Max Label



80 x 30 x 3.8 mm
 Up to 12.0 m (US), 8.0 m (EU)
 Metal and Non-metallic substrates

Max Rigid Case



104 x 33 x 8.4 mm
 Up to 12 m (US), 10 m (EU)
 Metal and Non-metallic substrates

Pipe



79 x 74 x 20 mm
 Up to 15.0 m
 Optimized for Metal substrates

Prox Label



Dimension : 33 x 10 x 4.8 mm
 Read Range : Up to 3m (US), 2m(EU), 2.5m(GS)
 Material : Metal and Non-metallic substrates

Prox NG



37.5 x 12.5 x 4.5 mm
 0.9 m +/- 25%
 Metal and Non-metallic substrates

Prox Rigid Case



50 x 16 x 8.4 mm
 Up to 3.0 m
 Metal and Non-metallic substrates

Prox Fi



34 x 11 x 7.5 mm
 Up to 3.0 m
 Metal and Non-metallic substrates

Solo



108 x 59 x 12.5 mm
 Up to 15.0 m

AZ-D



Dry Inlay Size : 95 x 3mm
 Wet Inlay Size : 124 X 7mm
 Read Range : 860~960MHz
 IC Type : Higgs3

AZ-E



84 X 3mm
 124 X 7mm
 860~960MHz
 Higgs3

AZ-H



95x 3mm
 124 X 7mm
 860~960MHz
 Higgs3

AZ-M



95 X 3mm
 124 X 7mm
 860~960MHz
 Monza 4D, 4E, 4QT

AZ-9640



95 X 8mm
 99 X 12mm
 860~960MHz
 Higgs3

AZ-9662



Dry Inlay Size : 70 X 17mm
 Wet Inlay Size : 74 x 21mm
 Read Range : 860~960MHz
 IC Type : Higgs3

AZ-9654



93 X 19mm
 96.5 X 22.5mm
 860~960MHz
 Higgs3

AZ-9630



70 X 10mm
 74 X 14mm
 860~960MHz
 Higgs3

AZ-9634



46 X 44mm
 50 X 48mm
 860~960MHz
 Higgs3

AZ-9610



45 X 10mm
 49 X 14mm
 860~960MHz
 Higgs3

AZ-9613



Dry Inlay Size : 12 X 9mm
 Wet Inlay Size : 16 X 13mm
 Read Range : 860~960MHz
 IC Type : Higgs3

AZ-9629



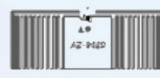
23 X 23mm
 27 X 27mm
 860~960MHz
 Higgs3

AZ-9627



45 X 30mm
 49 X 34mm
 860~960MHz
 Higgs3

AZ-9620



27 X 10mm
 31 X 14mm
 860~960MHz
 Higgs3

AZ-9762



70 X 17mm
 74 x 21mm
 860~960MHz
 Higgs4

AZ-9730



70 X 10mm
 74 X 14mm
 860~960MHz
 Higgs4

AZ-9710



Dry Inlay Size : 45 X 10mm
 Wet Inlay Size : 49 X 14mm
 Read Range : 860~960MHz
 IC Type : Higgs4

AZ-9740



95 X 8mm
 99 X 12mm
 860~960MHz
 Higgs4

AZ-B44



44.45 X 10.33mm
 49 X 17mm
 860~960MHz
 4D, 4E, 4QT

AZ-EF



66 X 26mm
 70 X 30mm
 860~960MHz
 4D, 4E, 4QT

AZ-F7



26 X 16mm
 30 X 20mm
 860~960MHz
 NXP Ucode 7

AZ-G7



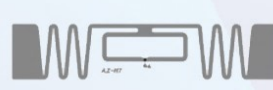
Dry Inlay Size : 50 X 30mm
 Wet Inlay Size : 54 X 34mm
 Read Range : 860~960MHz
 IC Type : NXP Ucode 7

AZ-D7



95 X 3mm
 124 X 7mm
 860~960MHz
 NXP Ucode 7

AZ-H7



68 X 14mm
 72 X 18mm
 860~960MHz
 NXP Ucode 7

YTG-620



93 X 19mm
 97 X 23mm
 860~960MHz
 Monza 4D, 4E, 4QT

YTG-621



93 X 19mm
 97 X 23mm
 860~960MHz
 Monza MR6

ZIOT-TG-001



Dry Inlay Size : 62x32 mm
 Wet Inlay Size : 65x35 mm
 Read Range : 860~960MHz
 IC Type : Monza 4QT (4D, 4E)

ZIOT-TG-053



38x18 mm
 41x21 mm
 860~960MHz
 Monza MR6-P

ZIOT-TG-031



92x44 mm
 95 x 47 mm
 860~960MHz
 Monza 4QT (4D, 4E)

ZIOT-TG-B44



24 X 24mm
 27 X 27mm
 860~960MHz
 Monza 4QT (4D, 4E)

ZIOT-TG-H47



44 X 44mm
 47 X 47mm
 860~960MHz
 Monza 4QT (4D, 4E)

ZIOT-TG-H41



44 X 44mm
 47 X 47mm
 860~960MHz
 Monza 4QT (4D, 4E)

ZIOT-TG-072



55 X 35mm
 58 X 38mm
 860~960MHz
 Monza 4QT (4D, 4E)

ZIOT-TG-050



Dry Inlay Size : Φ20.2 mm
 Wet Inlay Size : Φ24 mm
 Read Range : 860~960MHz
 IC Type : Monza MR6-P

ZIOT-TG-E44



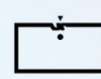
105 X 6mm
 108 X 9mm
 860~960MHz
 Monza 4QT (4D, 4E)

ZIOT-TG-E41



94 X 8mm
 97 X 11mm
 860~960MHz
 Monza 4QT (4D, 4E)

ZIOT-TG-025



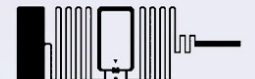
12 X 6.5mm
 15 X 9.5mm
 860~960MHz
 Monza 4QT (4D, 4E)

ZIOT-TG-061



29x24 mm
 32 X 27mm
 860~960MHz
 Monza MR6

ZIOT-TG-022



36 X 12mm
 39 X 15mm
 860~960MHz
 Monza MR6-P

S9028PCR
Antenna

Speedway
Antenna Hub

Threshold-FS
Antenna

R420



Dimension
Operating Temperature
Environmental Sealing
Input Power

: 259 x 259 x 36 mm
: -25°C to +70°C
: IP 54
: 40 dBm

: 102 x 61 x 24 mm
: -40 °C to +80 °C
: IP52
: 34 dBm

: 457 x 89 x 19 mm
: -25 °C to +55 °C
: IP54
: 30 dBm

: 190 x 175 x 30 mm
: -20 °C to +50 °C
: IEC IP52
: PoE at +30 dBm

AN 480

AN 440

ZT410

ZD500R



Dimension
Operating Temperature
Environmental Sealing
Power

: 259.1 x 259.1 x 33.5 mm
: -25° C to +70° C
: IP 54
: Max 2 W

: 575.1 x 259.1 x 33.52 mm
: -22°F to +158°F
: IP 67
: Max 10 W

: 324 x 269 x 495 mm
: 0°C to +40°C

: 254 x 193 x 191 mm
: 4.4°C to 40°C

RFD2000

DS9908R

MC3390R

RF8500

FX9600



Dimension
Operating Temperature
Environmental Sealing
Power

: 149 x 79 x 133 mm
: -10° C to +50° C
: IP 52

: 216 x 89 x 152 mm
: 0° C to 40° C

: 164 x 96 x 271mm
: -20° C to 50° C
: IP 54

: 130 x 80 x 185 mm
: -10°C to +40°C
: IP 52

: 276 x 184 x 50 mm
: -20°C to +55°C
: IP 53

CIPHERLAB 2220

RK25

9700

RS31



Dimension
Operating Temperature
Read Range

: 80 x 83 x 150 mm
: 0 °C to 40°C
: --

: 168 x 73.8 x 26 mm
: -20°C to 50°C
: --

: 214 x 87 x 47 mm
: -20°C to 50°C
: --

: 159 x 80 x 17.3 mm
: -20°C to 50°C
: --

CS108

CS203

CS463

CS468



Dimension
Operating Temperature
Read Range

: 161 x 90 x 161 mm
: -20°C to +55°C
: Up to 18m Linear Polarize
: Up to 15m Circular Polarize

: 300 x 300 x 75 mm
: -20°C to 60°C
: Up to 13 m

: 272 x 153 x 25 mm
: -20°C to 50°C
: Up to 12 m

: 272 x 142 x 47 mm
: -20°C to 50°C
: Up to 12 m

PX-AHD20BLT-IR

PX-AHD20DOM-IR

SE-A5516BD

VTT-420AS



Dimension : 174 x 65 x 65 mm
 Power Consumption : DC 12V 10%
 Output : Full HD 1080P

92 x 64 mm
 DC 12V 10%
 Full HD 1080P

370 x 300 x 60 mm
 DC 12V / 5A
 PAL/NTSC (1080P)

Dimension : 330 x 990 mm (side view)
 Operating Temperature : -20 °C to +60 °C
 Speed : --
 Housing : 304 grade stainless steel

VTT-1200BS

PGB-N Series

Crank Arm

Fence Arm



Dimension : 280 x 990 mm (side view)
 Operating Temperature : -20 °C to +60 °C
 Speed : --
 Housing : 304 grade stainless steel

329 x 345 x 950 mm
 -25 °C to +55 °C
 0.8s, 1.5s, 2s, 3s, 4s optional
 2mm cold-roller sheet

Anti-collision Arm

Color Optional



AR-331

AR-723

AR-837 (EF-3DO)

AR-881



Communication Interface : RS-485 (Ethernet by Order)
 Card User Capacity : 16,000 / 32,000 / 65,000
 Event Logs : 32,000
 Operating Mode : Stand-alone / Networking

RS-485
 1,024
 1,200
 Stand-alone / Networking

RS-485 (Ethernet by Order)
 16,000
 32,000
 Stand-alone / Networking

RS-485+ Ethernet
 16,000 / 32,000 / 65,000
 32,000
 Stand-alone / Networking

AR-331

AIM 68

TREK-530

DLT-V72



Enabling an Intelligent Planet



Dimension : 123.97 x 65.21 x 23.14 mm
 Frequency : 13.56MHz (NFS)
 Operating Temperature : -30 ~ 70 °C

280 x 18.3 x 180.1 mm
 -10 ~ 50 °C

110 x 70 x 10 mm
 13.56MHz

296.4 x 266.2 x 66.7 mm
 -30 ~ 50 °C

ACP24

@MESH 100 & @MESH 500

AMU24

APE24



Bringing People Together



SDRAM : 32 M Byte
 Operating Temperature : 0° to +70°C
 Transmission Power : Up to 28dBm

16 M Byte
 -20 to +70°C
 @MESH 100: 20dBm±2dBm
 @MESH 500: 27dBm±2dBm

32 M Byte
 0° to +70°C
 Up to 28 dBm

32 M Byte
 -20 to +70°C
 Up to 28 dBm

P-Alert

P-Alert+



Features

Supports NTP (Network Time Protocol) time calibration
 Embedded Web Server, for easy set-up
 3sets of Relay Outputs
 Real-time intensity broadcasting
 Earthquake data recording



Features

Low Cost
 Highly Reliable
 Internationally proven
 8GB system storage
 MEMS and GEOPHONE modern sensors



An asset management system is an application to manage, track and monitor company assets with ease and efficiency. With the help of RFID technology, an automated tracking and faster inventory of assets is possible. The burden of doing inventory of assets on a yearly basis which consumes a lot of manpower is now answered. With Asset Pro, a monthly inventory can be done with ease with the use of RFID.

Features

- Asset Assignment
- Asset Audit
- Locate Asset using maps
- Ingress and Egress

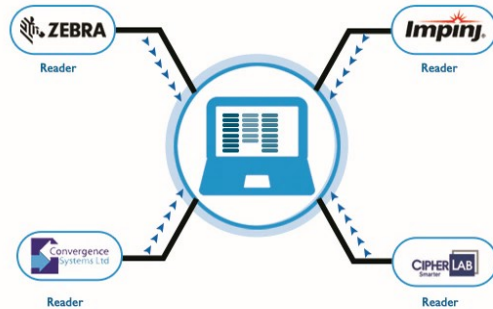


In almost every industry, buyers are becoming more fickle, and more demanding. For logistics executives, effectively meeting buyer needs has become a relentless quest for speed and agility. Traditional supply chain solutions – siloed, complex and hard-to-implement – no longer suffice, as competitors find ways to deliver goods faster and more profitably.



Multiportal

A data collecting engine which can be used in most brands of known RFID fixed and handheld readers. This engine can collect data from multiple brand of devices connected simultaneously and saves in SQL server database. HTTP post sending is also available for systems hosted on cloud.



Golden Aurum System Solutions, Inc.

1327 Chua Ang Sing Bldg. Sanchez St. Manila, Metro Manila, Philippines 1013

Tel. Nos.: (632) 8367 2769 • (0915) 332 4476

service@goldenaurum.com • sales@goldenaurum.com

www.goldenaurum.com • www.assetpro.com.ph

partenered with

